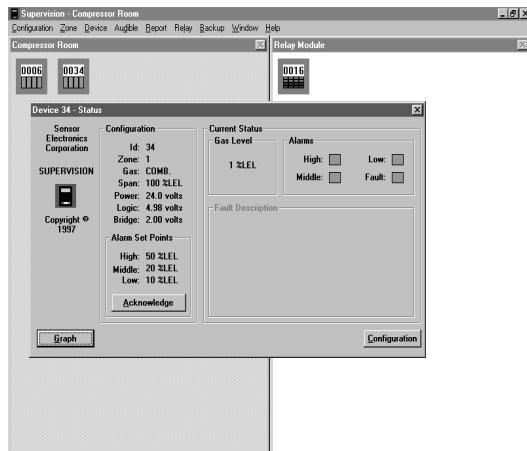


Supervision Plus Software Package



Features

- Operates using Microsoft® Windows® 3.1, Windows® 95, Windows® 98
- Microsoft® Windows® NT version available
- Communicates directly with SEC devices
- Stored information can be viewed, graphed and printed for hard copy reports
- Interfaces the SEC RS-485 data highway through the SEC NetLink II translator
- Easy to use point and click icons to view the status of individual sensing points
- Multiple PC's can run Supervision Plus at the same time in different locations
- Easy to use pull down print menus to automatically print alarms and log reports
- Display shows Time Weighted Average (TWA) and Short Term Exposure Limit (STEL) with automatic calculations for individual gas detectors
- Operator can easily customize color and input tag numbers or location descriptions of points on the graphic display
- SEC 4855 Relay Modules are controlled by SEC Supervision Plus
- Data is easily backed up to an alternative data storage medium
- Programmable dual switching LAN network

Operation

Supervision Plus is a software program that integrates SEC field devices into a hazard event monitoring system. Supervision Plus runs in the background of a computer running a Microsoft® Windows® based operating system. Each device is displayed as an icon on the computer screen. The icon has four boxes that will change colors for various conditions allowing the operator to see at a glance if any device is in alarm or fault. Each device has a data file that is continuously updated storing information on the computer's hard drive. The stored information can be viewed, graphed and printed for hard copy reports. Supervision Plus can be used in an active mode controlling the network or in a passive mode when used with the SEC 4100 System Monitor.

Part Number:

142-0212 (includes SEC 4854 Net Link II)

Microsoft and Windows are either trademarks or registered trademarks of Microsoft Corporation in the United States and/or other countries.

Sensor Electronics Corporation

5500 Lincoln Drive, Minneapolis, Minnesota 55436 U.S.A. • (800) 285-3651 • (612) 938-9486 • FAX: (612) 938-9617

Email: sensor@minn.net • Website: www.sensorelectronic.com

Sensor Electronics Corporation reserves the right to alter specifications without prior notice.