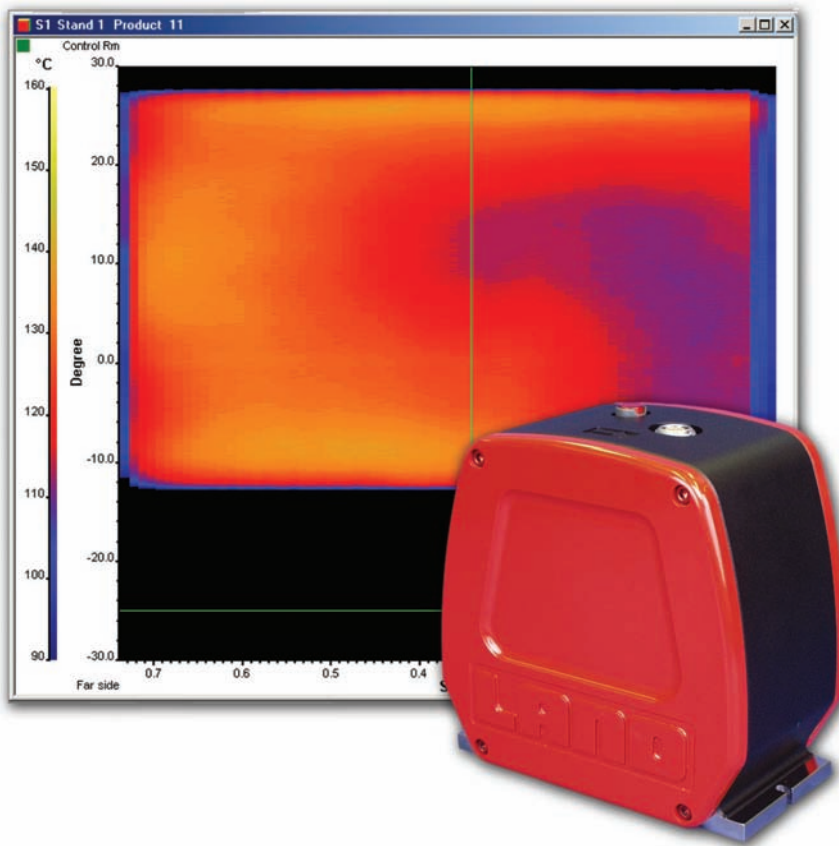


# LAND



## **LANDSCAN** Infrared Linescanners

The Process Imaging Systems for  
Thermoforming Applications

An **AMETEK**® Company

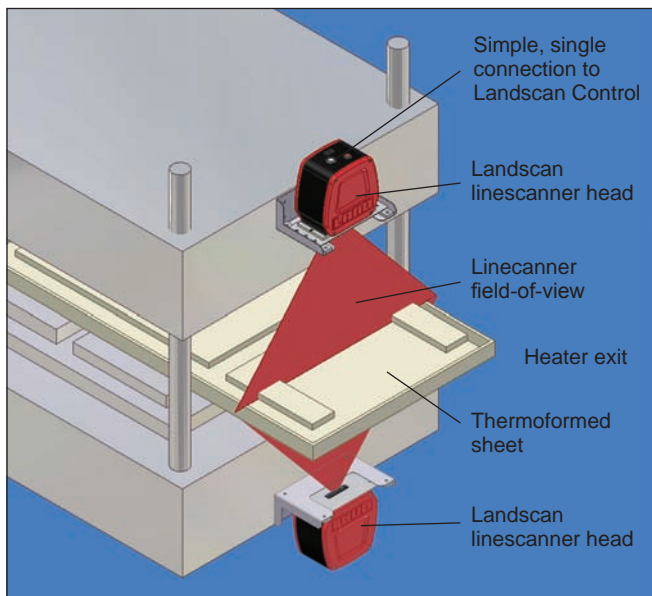
# INFRARED LINESCANNING SYSTEMS FOR THE PLASTICS THERMOFORMING INDUSTRY

## LANDSCAN

*Landscan . . . infrared linescanning systems . . . provide accurate visualization of temperatures in plastics thermoforming applications*

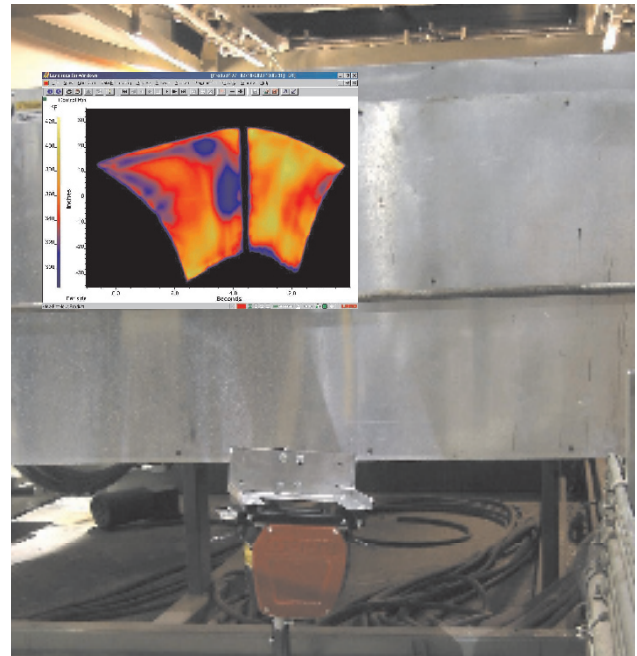
### BENEFITS

- Rapid adjustment of heaters for proper heating of sheet
- Improve product quality and operating profitability
- Detect product defects and failed heating elements quickly
- Automated quality monitoring
- Reduced set-up time and scrap rate
- Split, merge or override individual heater segments



Consistent, accurate temperature information is critical in the thermoforming process to ensure that the finished product is correctly formed. Low forming temperatures produces stresses in the formed part and temperatures that are too high can cause problems such as blistering and loss of colour or gloss.

The new Landscan Thermoforming Software is specifically designed to provide this critical information, through, for example, live user-configurable displays, process control system interfaces and product database/statistical summaries for Quality Assurance purposes.

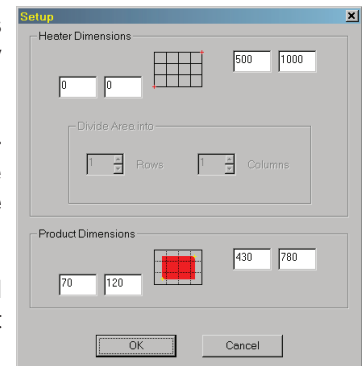


*LSP mounted below the sheet on a thermoforming machine.*

*Inset shows typical thermal profile before correction.*

### FEATURES

- Simple installation with customised configurations
- Extensive storage, display and analysis capabilities
- Process temperature data from multiple sensor heads, and database and archive files simultaneously
- Display thermal images and temperature profiles
- Displays include: thermal map, profile, 3-D, two independent zone models, centre-line deviation, subtracted thermal map and envelope profile
- Spot temperatures analyzed at any point
- Detailed user-defined zone temperature analysis
- Flexible, digital and analog Input/Output options



*Simple setup of heater matrix and product dimensions*

# VISUALIZE THE TRUE TEMPERATURE IN YOUR THERMOFORMING PROCESS

The new Landscan Thermoforming System allows thermoformers to monitor and record the temperature distribution of plastics and improve operating efficiency and product quality.

The Landscan processor and thermoforming Software, used with Landscan infrared linescanners, provides high precision measurement of the individual zone temperature distribution on plastics sheet produced by rotary thermoforming machines.

The software calculates and corrects for the distortion of thermal profiles caused by movement of the heated sheet on rotary machines during the thermoforming process, allowing accurate determination of zone heating temperatures.

Distortion occurs in a conventional image when the heated sheet indexes out of the oven, and traverses through the linescanner field-of-view.

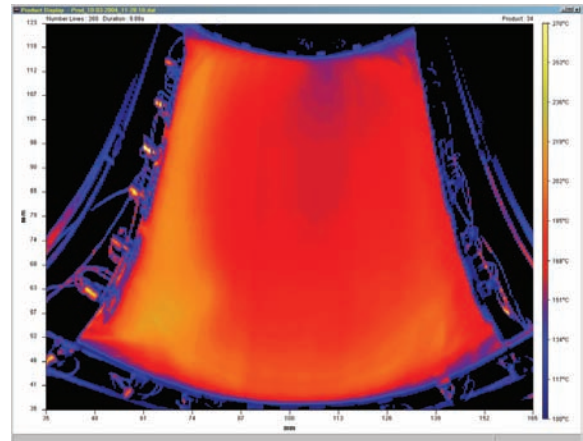
Accurate measurement of the sheet temperature, as it exits the thermoforming oven, provides temperature data for the oven heating control system in order to achieve the required thermal profile in each zone.

**Heater zone and Product Area** - Simple, selectable zone adjustment using either global or individual zone settings. Merge and delete zones and set position and size of the sheets.

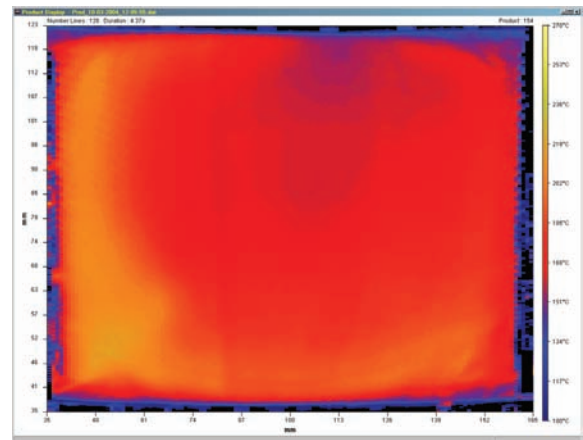
**Displays** - Map, 3-D map and profiles. 2-D map with overlay of the heating elements and temperature indication for each zone, on the relevant product area.

**Product Detection** - Either by temperature or triggered by a digital contact.

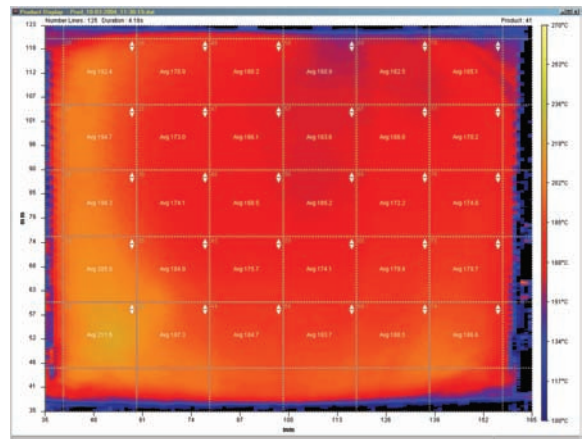
**Input/Output** - Zone data is available as analog outputs with additional alarm settings.



Uncorrected thermal map of heated plastics sheet exiting a rotary thermoforming machine



Thermal profile after correction applied by the Landscan Thermoforming software



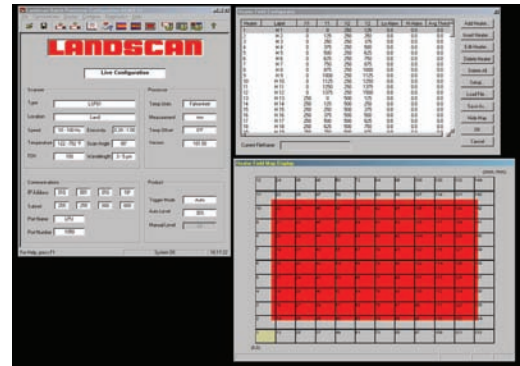
Corrected thermal profile with over lay of heater



LSP scanner head and Landscan Control signal processor

## More reasons why should you use Landscan

- Landscan offers the highest resolution scanner available. LSP operates at 100Hz with 1000 measurements/line - 100,000 samples/s.
- The ambient operating temperature of the scanner head is rated to 60°C/140°F without the need for additional cooling.
- Mounting accessories extend operation up to 100°C/212°F.
- An extremely robust sapphire protection window, enables operation for many years without replacement and costly maintenance.
- A built-in laser sighting facility as standard provides indication of the scan plane and angle for ease of installation.
- The scanner can be readily removed from the tool-free mounting plate, and without changing the alignment.



## Specifications

Type:	LSP61	LSP71
Measurement range:	50 to 400°C/ 122 to 752°F	50 to 350°C/ 122 to 662°F
Plastics type:	Thick sheet	Thin sheet
Scan angle:	80°	
Scan speed:	10 to 100Hz (in 10Hz steps)	
Spectral response	3 to 5µm	3.4µm
System accuracy:	+2°C/3.6°F	
Repeatability:	+0.5°C/0.9°F	
Temperature resolution:	≤2°C/3.6°F (100-150°C /212-272°F) <1°C/1.8°F (>150°/272°F)	
Target width:	12mm/0.5in at <1200mm/47.2in; FOV 100:1>1200mm/47.2in	
Emissivity:	0.20 to 1.00	
Ambient temperature:	5 to 60°C/41 to 140°F	
Alignment laser:	Class 2, max. output 1.0mW	

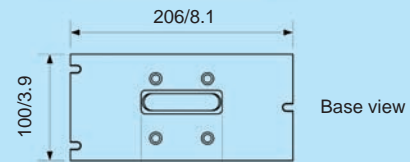
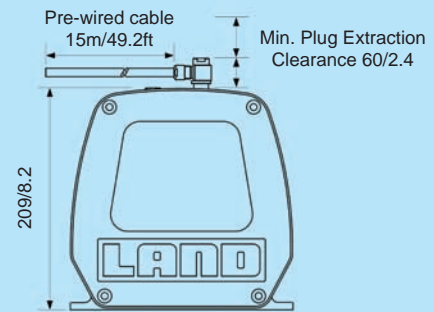
## Landscan Control Processor

Resolution:	12-bit
Temperature samples:	1000 per line
Output refresh rate:	Up to 100Hz (equal to scan rate)
Inputs:	Fast temperature, scan valid, trigger input, head internal temperature
Power requirement:	100 to 240V a.c., 50 to 60Hz, 50W
Features:	Diagnostics LED's Easily set IP address

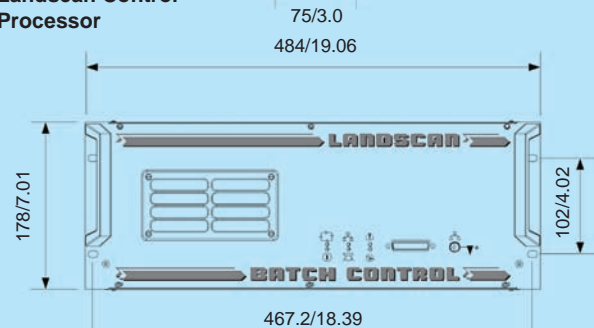
## Dimensions

Dimensions in mm/in

### LSP Linescanner Head



### Landscan Control Processor



The Quality Management System at Land Instruments/Ametek Land, Inc. is approved to ISO 9001:2000 for the design, manufacture, stockholding, in-house repair and site servicing of non contact temperature measuring instrumentation. Associated software is designed and developed in accordance with TickIT. The Quality Management System at AMETEK Land, Inc. is also approved to ISO9001:2000 and covers the engineering support and in-house repair facilities. LAND also operates extensive calibration services – with calibration traceable to National Standards. Calibration certificates are issued in compliance with ISO 17025:1999.

# LAND

## Non-Contact Temperature Measurement Solutions

An AMETEK Company



Applies to the UK

Land Instruments International Ltd • Dronfield S18 1DJ • England • Tel: +44 (0) 1246 417691 • Fax: +44 (0) 1246 410585  
Email: [infrared.sales@landinst.com](mailto:infrared.sales@landinst.com) • [www.landinst.com](http://www.landinst.com)

AMETEK Land, Inc. • 150 Freeport Rd. • Pittsburgh, PA 15238 • U.S.A. • Tel: +1 (412) 826 4444  
Email: [irsales@ametek.com](mailto:irsales@ametek.com) • [www.landinstruments.net](http://www.landinstruments.net)

**France**  
Ametek SAS - Land  
Tel: (1) 30 68 89 80 • Fax: (1) 30 68 89 99  
Email: [land.france@ametek.com](mailto:land.france@ametek.com)

**Japan**  
Land Instruments Ltd  
Tel: 06 6330 5153 • Fax: 06 6330 5338  
Email: [info@landinst.jp](mailto:info@landinst.jp)

**China - Beijing**  
Land Infrared Temperature Measurement  
Tel: +86-10-85262111 Ext 39  
Fax: +86-10-85262141  
Email: [infrared.sales@landinst.com](mailto:infrared.sales@landinst.com)

**Germany**  
Ametek GmbH - Land Instruments  
Tel: 02171/7673-0 • Fax: 02171/7673-9  
Email: [info.land-de@ametek.de](mailto:info.land-de@ametek.de)

**Spain**  
Land Instruments International  
Tel: 91 630 0791 • Fax: 91 630 2918  
Email: [land-infrared@landinst.es](mailto:land-infrared@landinst.es)

**Italy**  
Ametek Srl - Land Division  
Tel: 02/946931 • Fax: 02/94693850  
Email: [info.land@ametek.it](mailto:info.land@ametek.it)

**Mexico**  
Ametek Land Inc.  
Tel: 52 55 52811165, 52807933 • Fax: 52 55 52815364  
Email: [ventas@ametek.com](mailto:ventas@ametek.com)

REGISTERED  
**ISO 9001**  
MANAGEMENT SYSTEM

LABORATORY  
ACCREDITATION  
BUREAU  
ACCREDITED  
ISO/IEC 17025:2005

Applies to the USA