

# iVS-2SX+

## Socket Scanner

### Special Features

**Battery Ride Through:** The device operates with no input voltage for up to 30 minutes, allowing the device to measure down to 0 volts during power outage periods.



**Memory:** 128K RAM  
256K to 2 MB Flash  
User selected stop-when-full or wrap-around memory modes



### Communications

**Local:** RS232 port

**Data Range:** 4,800 to 38,000 baud



Tools you need. People you trust

**Power Monitors Incorporated**

800 North Main Street  
Mt Crawford, VA 22841

Phone: (800) 296-4120  
Fax: (540) 432-9430

### Mechanical Specifications

**Dimensions:** 4 5/8 in. X 6 3/4 in.

**Weight:** 3.6 lbs

### Electrical Specifications

#### Inputs:

**AC Voltage:** Line-Neutral 0 to 240 VAC peak  
**AC Current:** 200 amps RMS  
**Sample Rate:** 7,680 per channel/second  
**Voltage:** 2 Channels  
**Current:** 2 Channels

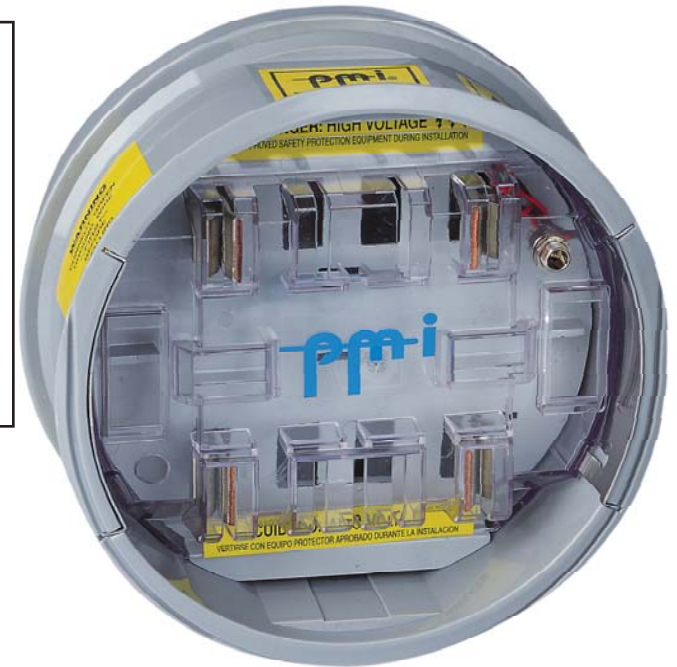


**Measures:** Voltage, Current, Power Factor, (Optional Measurements): Displacement Power Factor, Real Power, Reactive Power, Apparent Power, Phase Angle, Harmonics to the 31st.



#### Accuracy:

**Voltage:** 0.33% of full scale  
**Current:** 1.0% of full scale  
**Power:** 1.0 Watt  
**Phase Angle:** 1 degree  
**Power Factor:**  $\pm 0.02$   
**Displacement Power Factor:**  $\pm 0.02$



### Controls

**Stripchart settings:** 1 second to 4 hours

**Significant Change:** 1V to 8V in 1V steps

**Flicker Settings:** User-defined or default to conform to IEEE Standard 141

**Battery Voltage Check:** Automatic

### Environmental

**Operating Temperature:** -20 to 135 degrees F

**Shock:** 60Hz to 2kHz, Acceleration 25G

**Vibration:** 10Hz to 60Hz, Amplitude 1.8mm