



SINGLE high-temperature oil-operated temperature control units up to 350 °C

D series

High-temperature oil-operated temperature control units are recommended for applications that rule out water-operated systems due to high temperature requirements. Thanks to its wide variety of options for capacity, temperature range and dimensions, the D Series is suitable for many different processes and requirements within a wide capacity range. With its virtually unlimited amount of options and equipment variations, maximum reliability and precision, the D Series meets every demand.

Standard equipment

General

- Rugged, powder-coated sheet steel housing
- High-quality materials
- Roller mounted (optional for type DM)

Hydraulics

- Magnetically coupled pumps for D0 through to D2 (otherwise optional)
- Dirt traps in return and cooling water supply line
- Flow metering by means of differential pressure

Electric and control equipment

- Intelligent SC standard controller with colour display (optional SC professional)
- Heating control by solid state relay with fail-safe pilot contractor
- Heating cartridge without direct contact with the oil from type D0 up
- Electronic safety temperature limiter
- Switch box to IP54
- Cable connector without plug

Options

- Vapour heating
- Closed-loop control by pneumatic or motor-driven continuous control valves
- Heat exchanger bypass on the temperature-control fluid side
- Connection for various analogue and digital electric interfaces
- Virtually unlimited hydraulic and electric options



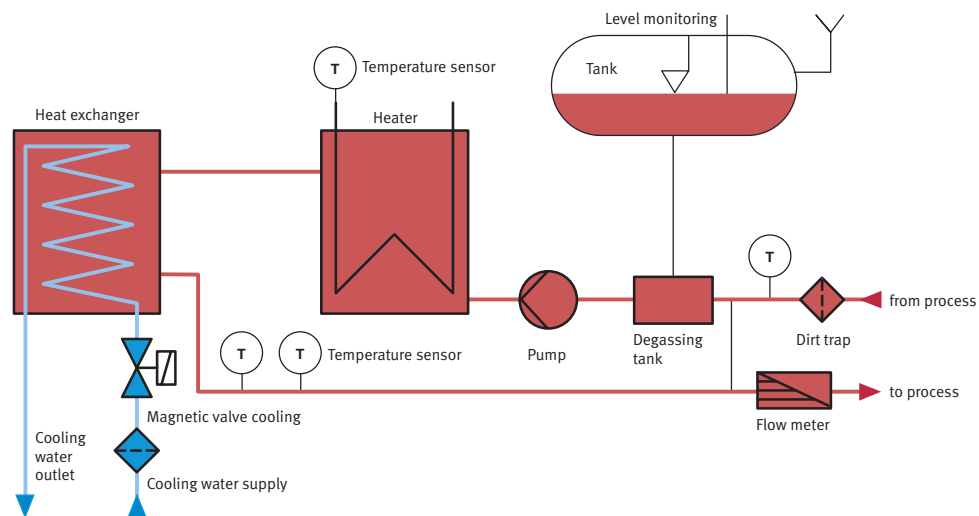
SINGLE Temperature Controls, Inc., Whitehall Tech Center II
2915 Whitehall Park Drive, Suite 700, Charlotte, NC 28273, USA
Telephone: +1 704 588 5408, www.single-temp.com

single
first choice
in temperature control





SINGLE high-temperature oil-operated temperature control units up to 350 °C D series



D series								
Structural units		DM	D0	D1	D2	D3	D4	D5
Max. temperature range	°C	180/250	300	300	300/350	300/350	300/350	300/350
Max. external volume	l	9/5	7	16	86/66	157/121	142/106	92/65
Heating capacity	kW	3/6	6	9/12	12/18/24/36	24/36	48/60/72/84/96	72/96/120/144
Cooling capacity (150 °C outlet/15 °C cooling water)	kW	14	14/28	14/28/48	28/48/69/93/116	69/116	69/116/174	116/232
Max. flow rate	l/min	45/60*	60	60/80*	100/150*	360/325*/340*	530/550*/600*	1050/1080*/950*
Max. pressure (max. values of the characteristic)	bar	6/6*	6	6/11*	8/11*	4,2/4,8*/5,8*	4,2/4,7*/6,2*	3,5/4,5*/6,2*
Pump motor capacity	kW	0,75/1*	1	1/2,8*	2,8/4*	3/4*/5,5*	4/5,5*/7,5*	5,5/7,5*/11*
Connections circulating media		G 1/2" MPT	G 1/2" MPT	G 1/2" MPT	AD 28-L	DN 32	DN 40	DN 65
Connections cooling water	MPT	G 3/8"	G 3/8"	G 3/8"	up to G 1/2"	G 1/2"	G 1/2"	G 1/2"
Internal filling volume	l	3	5	8	22	40	55	105
Dimensions (without connections)	L mm	540	755	805	1125	1330	1780	1925
	W mm	255	315	345	395	580	730	730
	H mm	545	790	970	1210	1680	1780	2230
Approximate weight	kg	60	100	120	225	460	650	900

* Special pump

03/2009 US

