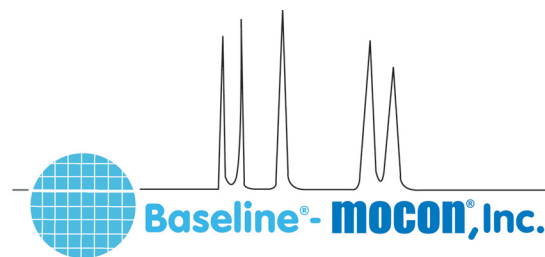


Series 8900GC Application Note

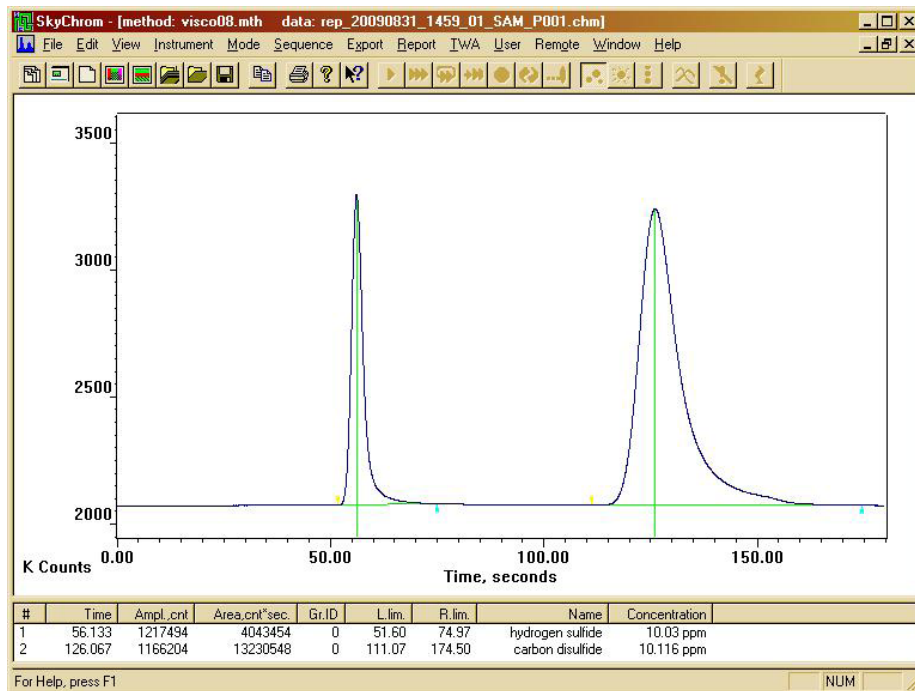
Hydrogen Sulfide and Carbon Disulfide in Air



Analyzer

The Series 8900 Hydrogen Sulfide and Carbon Disulfide Analyzer provides direct measurement of H₂S and CS₂ in ambient air. This instrument is utilized for continuous emission monitoring.

The Series 8900 H₂S and CS₂ Analyzer employs a Photoionization detector (PID) as the sensing element. A dual column configuration with timed backflush to vent is used to strip off moisture and heavier hydrocarbons. A pre-cut column is used in series with the analytical column. At sample injection a fixed volume of sample is carried to the pre-cut column. Backflush is timed so that only the H₂S, CS₂, and other similar components are eluted to the analytical column. Contaminants on the pre-cut column are backflushed to vent. H₂S and CS₂ are separated from potentially interfering components on the analytical column and elute to the detector for analysis.



Application

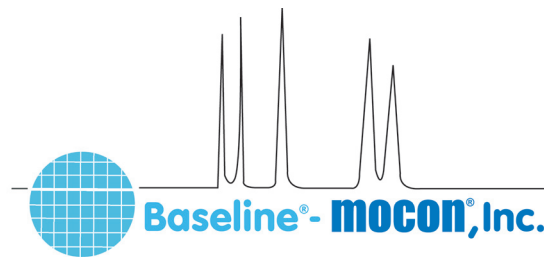
- Continuous emissions monitoring

Features

- Direct measurement of Hydrogen Sulfide and Carbon Disulfide
- Interference free response
- Automatic calibration for unattended operation
- Automatic baseline adjustment for long-term stability
- Analog output ranges are user selectable
- Summary or TWA report generation
- Graphic display of current or historical concentrations
- Multipoint sampling options
- RS-232 and optional LAN

Series 8900GC Application Note

Hydrogen Sulfide and Carbon Disulfide in Air



Specifications

Analysis Time: <180 seconds

Detector: PID

Column: Packed

Oven Temperature: 40°C, Nominal

Carrier Gas: Nitrogen, 13.5cc/min, Nominal

Lower Detection Limit: 20 ppb

Accuracy: 1% of Full-scale

Precision: 2% of Measured Value

Span Drift (24HR): <2% of Full-scale

Sample Flow Rate: 250-500cc/min, typical

Output:

Analog: (1) 0-20ma or 4-20ma loop power supplied, isolated. Selectable for: gas concentration, unintegrated detector signal. Options for up to 20 additional programmable 0-20ma, 4-20ma or voltage outputs: 0-1V, 0-5V, or 0-10V.

Digital: RS-232, optional Local Area Network

Relays: (5) User programmable relays for concentration and diagnostic alarms (1A @ 30Vdc). Options for up to 32 additional relays available.

Inputs: Optional digital input board for 3 contact closure inputs. Supports start analysis, start calibration, and analyze calibration gas sample.

This application note is an only an example based on customer or market specifications. These parameters are variable and therefore do not reflect all of the versatility and options of Series 8900 GC. Please contact Baseline regarding your specific application

A028.1

P.O. Box 649, 19661 Highway 36 • Lyons, CO 80540

P: 1.800.321.4665 • 1.303.823.6661 F: 303.823.5151 E: Sales@BaselineIndustries.com