



## **SINGLE compact water-operated temperature control units up to 90 °C** *TK series*

The compact water-operated temperature control units from the TK series for applications and requirements in the small and medium capacity range up to 90 °C are predominantly used for injection moulding applications but also for other processes. They are ideal for temperature-control during the production of high-quality articles and allow a documentation of process parameters.

### **Standard equipment**

#### General

- Rugged, powder-coated sheet steel housing
- Automatic and manual filling and replenishing
- Roller mounted

#### Hydraulics

- Hydraulic equipment stainless steel / non-ferrous metals
- Incolloy heater
- High-quality pump materials
- Leak stop with TK7 and TKN7
- Dirt traps in return and cooling water supply line
- Flow metering by means of differential pressure

#### Electric and control equipment

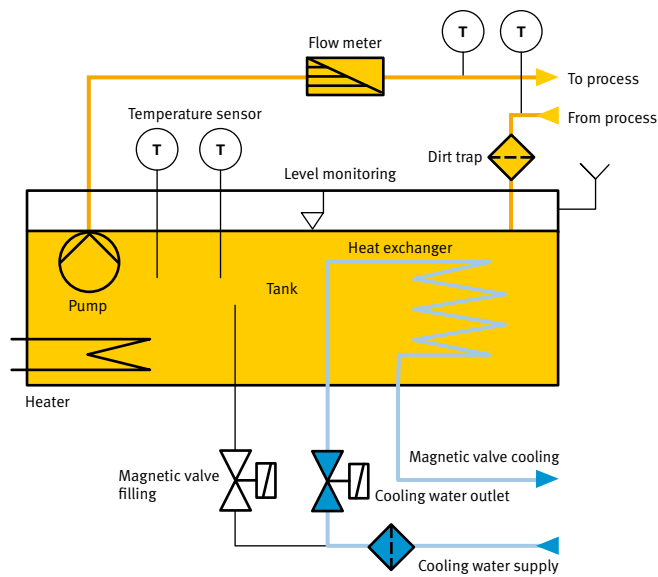
- Intelligent SC standard controller with colour display (optional SC professional)
- Heating control by solid state relay with fail-safe pilot contractor
- Connection for external PT 100 temperature sensor
- Connection for digital electric interface
- Switch box to IP54
- Cable connector without plug

#### **Options**

- Plate heat-exchanger for highly efficient cooling capacity
- Connection for various analogue and digital electric interfaces
- Virtually unlimited hydraulic and electric options
- Special construction for operation with heat transfer oil up to 150 °C



☀️ ❄️ **SINGLE compact water-operated temperature control units up to 90 °C**  
TK series



TK7 series					
Structural units		TK7	TKN7	TKS7	TKSG7
Max. temperature range	°C	90	90	90	90
Max. external volume	l	50	61	159	260
Heating capacity	kW	3/4,5/6/9	9/12/18/24	27/36/45	48/60/72
Cooling capacity (80 °C outlet/15 °C cooling water)	kW	23/50	23/35/50/80	35/100	35/250
Max. flow rate	l/min	40	60	135	240
Max. pressure (max. values of the characteristic)	bar	3,8/5,8*	3,8/5,8*	3,8/5,3*	4,1/6,2*/8,2*
Pump motor capacity	kW	0,50	0,5	0,925/1,34*	1,5/2,2*/3*
Connections circulating media	mm	14	21	28	38
Connections cooling water	Hose spout	14	14	14/21	14/28
Dimensions (without connections)	L mm	645	750	855	1365
	W mm	265	275	325	505
	H mm	525	735	875	1350
Approximate weight	kg	50	80	110	200

\* Special pump