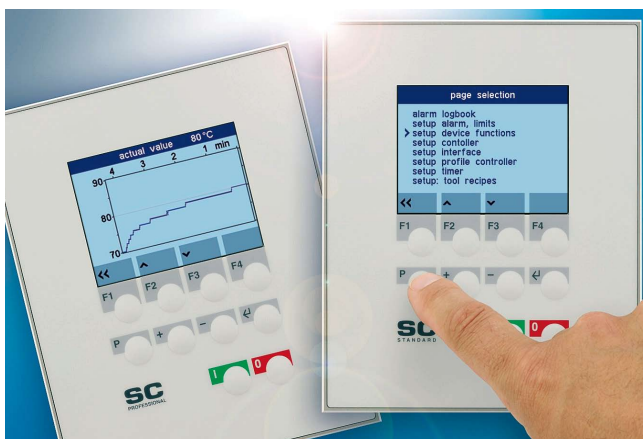




## SINGLE SC standard and SC professional controllers

Modern temperature control technology is expected to meet a wide range of control and parameterisation requirements. SINGLE SC controllers for closed and open-loop control are perfect for tapping into the full potential of SINGLE temperature-control units to suit individual requirements. Available as SC standard and SC professional, the controllers provide instructions in several languages, an intuitive user interface and a graphics-enabled colour display.



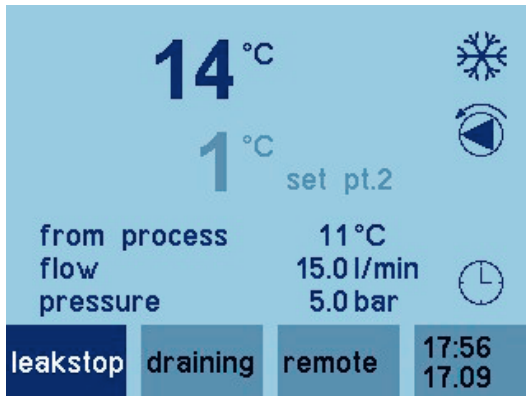
### Standard equipment

- Graphics-enabled text display
- Specifically assigned softkeys
- Detailed operation and alarm messages and real text parameters
- Text messages can be received and called up in any language
- Graphic presentation of measured and limit values of all temperatures and flow rate
- Trouble shooting tips can be called up in case of alarm
- Control function with several formulas, set values and ramp functions
- Alarm history
- Digital interface via RS 232, RS 485, customer-specific protocols TTY, Profibus DP, CAN Bus, Euromap 66, SPI, Modbus, Ethernet
- Substantial control and parameter options to solve temperature control tasks
- Real-time clock with clock relay function (optional)



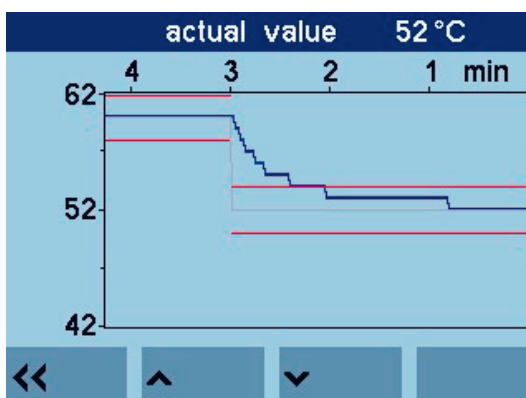
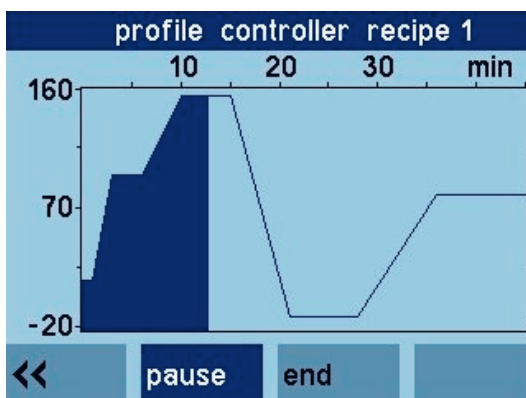


## SINGLE SC standard and SC professional controllers



recipe 1		
	temperature	time
> 1	15 °C	1 min
2	95 °C	2 min
3	95 °C	3 min
4	155 °C	4 min
5	155 °C	5 min
6	-12 °C	6 min
7	-12 °C	7 min

<< ^ v time



### Additional features: SC professional

- Pressure display and limit function
- Analogue interface to communicate set value and actual value via electric or voltage signal
- Selection of various temperature sensor inputs available
- Control through interconnection of internal and external temperature sensors as quasi-multi-stage switching sequence
- Substantial control and parameter options for handling special temperature control processes and systems.

