

☀️❄️ **SINGLE compact water-operated
temperature control units up to 160 °C**
K series

The compact water-operated temperature control units from the K series for applications and requirements in the small and medium capacity range up to 160 °C are widely used for injection moulding applications but are also suitable for other processes. They are ideal for temperature-control during the production of high-quality articles and allow a documentation of process parameters.

Standard equipment

General

- Rugged, powder-coated sheet steel housing
- Automatic filling and replenishing
- Roller mounted

Hydraulics

- Hydraulic equipment stainless steel / non-ferrous metals
- Incolloy heater
- High-quality pump materials
- Dirt traps in return and cooling water supply line
- Flow metering by means of differential pressure

Electric and control equipment

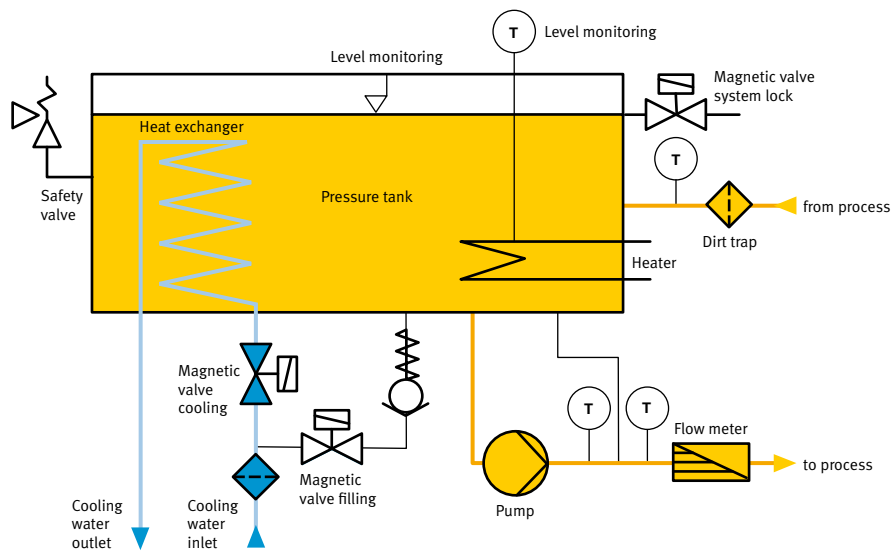
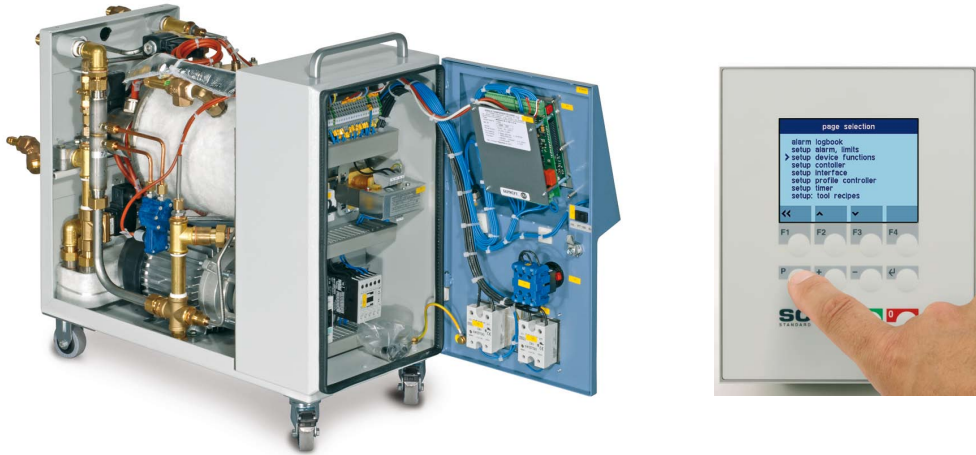
- Intelligent SC standard controller with colour display (optional SC professional)
- Heating control by solid state relay with fail-safe pilot contractor
- Connection for external PT 100 temperature sensor
- Connection for digital electric interface
- Switch box to IP54
- Cable connector without plug

Options

- Plate heat-exchanger for highly efficient cooling capacity
- Magnetically coupled pumps with type K7 / KN7
- Connection for various analogue and digital electric interfaces
- Virtually unlimited hydraulic and electric options



☀️ ❄️ **SINGLE compact water-operated temperature control units up to 160 °C**
K series



K series				
Structural units		K7	KN7	KS7
Max. temperature range	°C	150/160	150/160	150
Max. external volume	l	13/10	18/15	28
Heating capacity	kW	3/4,5/6/9	9/12/16,5	18/24/36
Cooling capacity (80 °C outlet/15 °C cooling water)	kW	11/23/50	20/35/80	52/81/100
Max. flow rate	l/min	60	60/100*	75/150*
Max. pressure (max. values of the characteristic)	bar	6,0	6,0/8,5*	3,9/6,1*
Pump motor capacity	kW	0,75	0,75/2,8*	0,55/1,5*
Connections circulating media	MPT	G 1/2"	G 3/4"	G 1"
Connections cooling water	Hose spout	14	14	14/21
Dimensions (without connections)	L mm	645	750	855
	W mm	265	275	325
	H mm	525	735	875
Approximate weight	kg	55	75	125

* Special pump