



## SINGLE water-operated control units for high temperatures up to 200 °C

*H series*

In contrast to heat-transfer oil, water used as a circulating medium provides numerous physical and economic benefits. The H series of water-operated temperature control units for high temperatures up to 200 °C meets the most stringent safety requirements while providing a wide capacity range and virtually unlimited options for applications up to 200 °C.

### Standard equipment

#### General

- Rugged, powder-coated sheet steel housing
- Automatic filling and replenishing
- Roller mounted

#### Hydraulics

- Incolloy heater
- Hydraulic equipment stainless steel up to structural unit H2.1
- High-quality pump materials
- Dirt traps in return and cooling water supply line
- Flow metering by means of differential pressure

#### Electric and control equipment

- Intelligent SC standard controller with colour display (optional SC professional)
- Heating control by solid state relay with fail-safe pilot contractor
- Electronic safety temperature cut out
- Switch box to IP54
- Cable connector without plug

#### Options

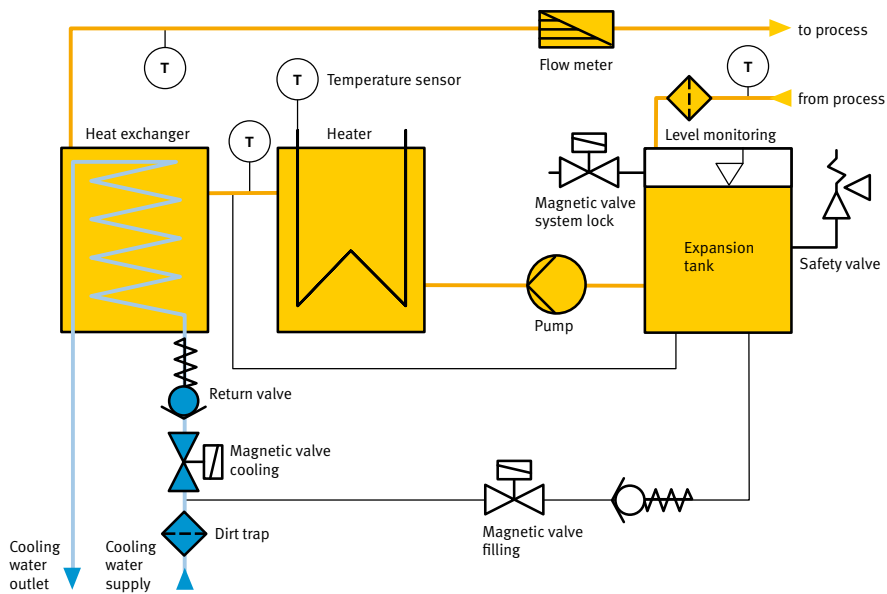
- Pressure booster pump
- Vapour heating
- Closed-loop control by pneumatic or motor-driven continuous control valves
- Operating temperature above 200 °C
- Connection for various analogue and digital electric interfaces
- Virtually unlimited hydraulic and electric options





# SINGLE water-operated control units for high temperatures up to 200 °C

*H series*



H series						
Structural units		H0.2	H1.2	H2.1	H3.1	H4.1
Max. temperature range	°C	200	200	200	200	200
Max. external volume	l	9	11	35	179	316
Heating capacity	kW	6/9/12	9/12/18	24/30/36	48/60/72	96/120/144
Cooling capacity (80 °C outlet/15 °C cooling water)	kW	29/41	29/41	69/92/116	116/174/232	116/174/232
Max. flow rate	l/min	60	100	200	280/320*	870/930*
Max. pressure (max. values of the characteristic)	bar	6	8	8	4,2/5,4*	4,2/5,4*
Pump motor capacity	kW	1,1	2,8	4	4/5,5	7,5/11
Connections circulating media		G 1/2" MPT	DN 20 PN 40	DN 25 PN 40	DN 50 PN 40	DN 65 PN 40
Connections cooling water	MPT	G 3/8"	G 3/8"	G 1/2"	G 1/2" - G 1"	G 1/2" - G 1"
Dimensions (without connections)	L mm	755	995	1200	1770	1940
	W mm	315	345	350	550	830
	H mm	765	945	1320	1665	2110
Approximate weight	kg	95	130	260	410	800

\* Special pump