

Powerful data collection, reporting and analysis software

DataTrace for Windows (DTW) software is everything customers asked for. And more. The hub of the DataTrace® process monitoring solution, DTW software works with all DataTrace data loggers, including the latest Micropack III™ (MPLI) series to provide a single, comprehensive monitoring system.

Easy-to-use DTW software is packed with time-saving features like shortcuts to minimize keystrokes, intuitive screens and batch functions. Field calibration is fast and hassle-free. MPLI Logger battery life is displayed during programming so you can check it before use. All with unmatched flexible and useful reporting capabilities – including the ability to create process phase reports with up to ten Logger profiles per page.

Unique features, exceptional security

For all its simplicity, DTW is a powerhouse program designed to help you control your process, budget and time. The FDA 21 CFR Part 11 compliant DTW software integrates smart security and regulatory capabilities including an audit trail log for all security levels, data encryption, electronic signatures, enhanced password protection and administrative security options. Lab notes for data reports can be created automatically, combined with accumulated lethality and displayed as required. And events such as field calibrations and Logger battery changes are automatically incorporated into the audit trail.

DTW software is also unique in its ability to consolidate and process data collected from various Logger types with ease. Only with DataTrace can you synchronize multiple, varied data loggers to the same clock, use one software solution to measure one or many process parameters and then view, analyze, report and compare data in any way you need.

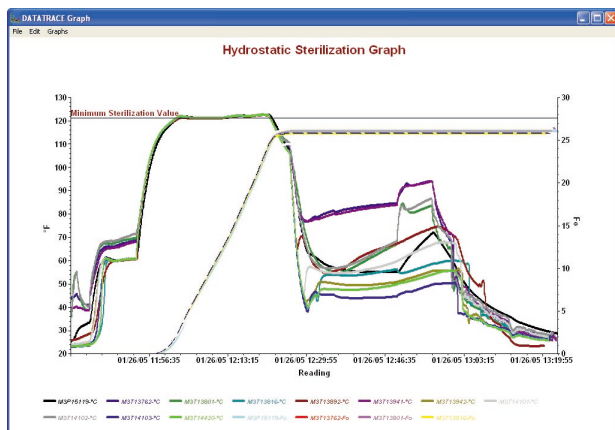
Business benefits

- ▶ DTW software works with all DataTrace data logger types since 1985 for a complete monitoring solution, providing protection for your investment
- ▶ A single, integrated solution which can be extended to simplify data logging of an array of process parameters to save you time and money
- ▶ Windows-based DTW provides you with powerful data logging and reporting capabilities with minimal training
- ▶ Fast, simple programming and data retrieval saves you time and money
- ▶ DTW software helps meet regulatory requirements, secure data, provide audit trails and complies with US FDA 21 CFR Part 11
- ▶ Simplify data collection and presentation by synchronizing all Loggers to one program or “clock” – something disparate systems can't do
- ▶ Accumulated lethality can be calculated from collected data and displayed in tables or graphs
- ▶ Customize graphs, overviews, summaries and reports with ease
- ▶ Protect data with audit trails, multi-level passwords, encrypted files and more for the utmost in securing your process data

DATA TRACE®

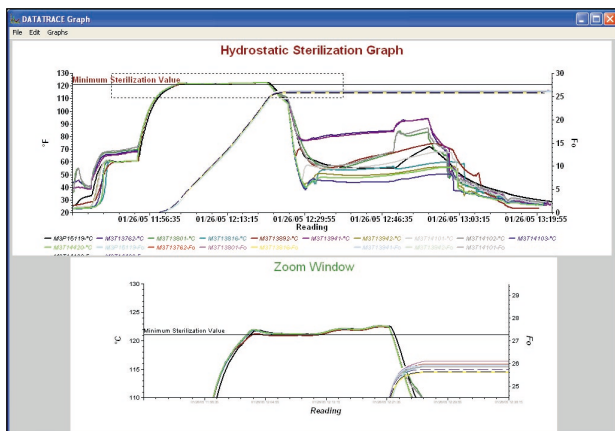


From programming to reporting, DTW offers power, flexibility and ease



Easy graphical presentation.

Up to 256 profiles can be graphed in DTW. Virtually all graph elements (titles, labels, colors, scales, and legends) can be edited by the user to provide a more usable and customized graphical analysis of the process. Furthermore, any annotation desired can be added to a graph, including your company logo.



Detailed graphical analysis.

Examination of areas that are of interest is easy. These areas can be focused on with the graphical analysis functions in DTW and is accomplished without losing the context of the entire process.

Print options allow selective printing of the graphed areas being focused on. DTW graphical images are easily imported into any other Windows-based program along with the data listing.

Profile List

Mesa Laboratories, Inc.

Profile	Start Time	Stop Time	Interval	Status/Collected	Data Validation	Comments
0311110	01/26/05 11:40:00	00:00:00:00	1029	As Collected		Pressure - front, center
0311182	01/26/05 11:40:00	00:00:00:00	1029	As Collected		Disinfection - Right, rear
0311884	01/26/05 11:40:00	00:00:00:00	1026	As Collected		Disinfection - Left, front
0311816	01/26/05 11:40:00	00:00:00:00	1029	As Collected		Pressure - Bag 1
0311892	01/26/05 11:40:00	00:00:00:00	1026	As Collected		Pressure - Tubing downhead
0311884	01/26/05 11:40:00	00:00:00:00	1026	As Collected		Disinfection - Left, rear
0311842	01/26/05 11:40:00	00:00:00:00	1013	As Collected		Pressure - Bag 2
0311102	01/26/05 11:40:00	00:00:00:00	1029	As Collected		Pressure - Bag A
0311109	01/26/05 11:40:00	00:00:00:00	1026	As Collected		Disinfection - Right, front
0311109	01/26/05 11:40:00	00:00:00:00	1020	As Collected		Pressure - Bag B
0311109	01/26/05 11:40:00	00:00:00:00	1026	As Collected		Pressure - Bag C

Detailed data reports.

Data listings can be created in formats that are most useful to the user. From creating a customized "Lab Notebook" sheet for keeping important study notes to getting segmented profiles with summaries for user-defined process phases.

All it takes is a few simple steps...

- ▶ Choose the type and number of Loggers you need to monitor your process. (There is no limit to the number you can use.) Then define your process program, place the Loggers in the PC interface and click on "Program Tracer." It's that easy.
- ▶ When programming several Data Loggers, using the Tracer Batch Mode option will prompt you to insert each subsequent Logger while the system automatically keeps count of the programmed Loggers. Once programmed, the Loggers can be put into the process.
- ▶ After retrieving and cleaning the Logger(s), place each logger in the interface and click on "Read Tracer." The data will be displayed in seconds.
- ▶ Once the data is collected from each Data Logger, you can display the data in a report or customizable graph – or both.
- ▶ Data and graphical reports can be segmented into process phases, each with its own summary. They can also include the study's "lab notebook."

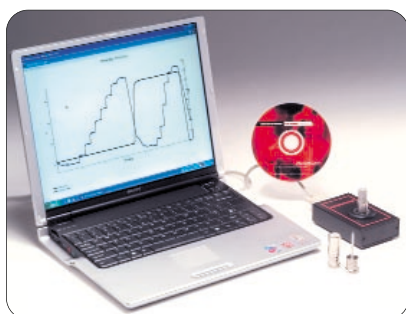
Minimum System Requirements

PC Requirements

- Windows 2000 or XP operating system
- 40 MB of free hard disk space
- 1 free USB port
- CD ROM drive, mouse

You can't beat the system

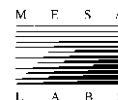
All DataTrace Loggers require a **PC Interface System**, which includes robust DataTrace for Windows software, an interface module and cable. The DTW software operates with any combination and number of DataTrace Temperature, HiTemp, HiTemp EXT, Humidity, Pressure and 4–20mA Loggers. So instead of dealing with the expense and confusion of disparate monitoring systems, users can monitor, log and analyze data for multiple process parameters using a single integrated, powerful and complete solution. *This makes DataTrace unique in the industry.*



DATA TRACE

A Division of Mesa Laboratories, Inc.
12100 West 6th Avenue
Lakewood, Colorado 80228

Toll-free 800.525.1215
Telephone 303.987.8000
Fax 303.987.8989



All specifications subject to change without notice. DataTrace is a registered trademark and Micropack III is a trademark of Mesa Laboratories, Inc. All other trademarks and registered trademarks are the sole property of their respective owners.

© Copyright 2007 Mesa Laboratories, Inc.

Form 468 Rev B

21 CFR Part 11
Compliant



datatrace@mesalabs.com
www.mesalabs.com