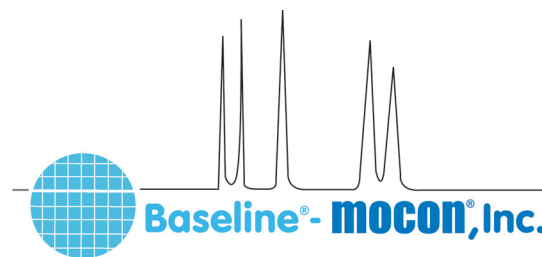


Series 8900GC Application Note

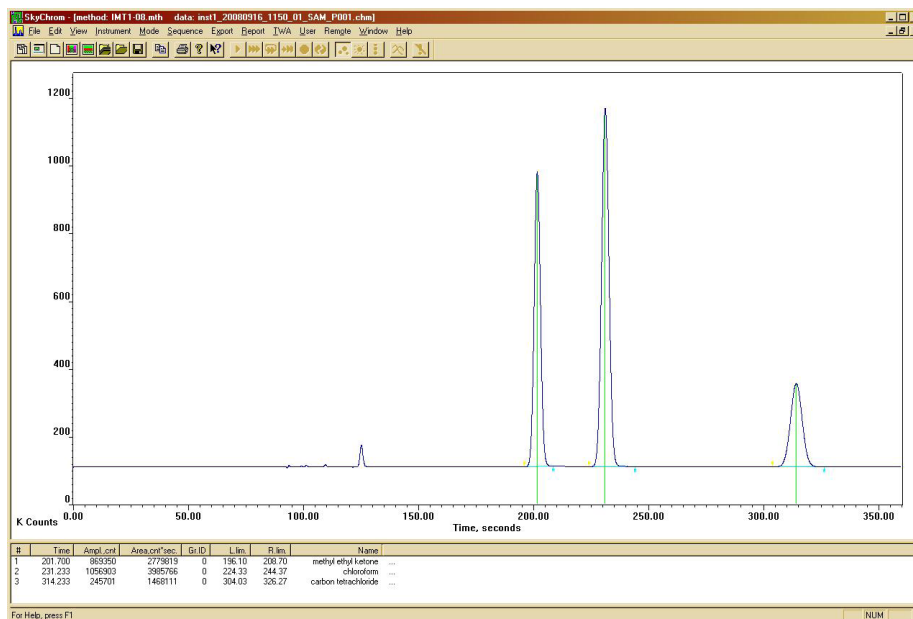
Methyl Ethyl Ketone, Chloroform and Carbon Tetrachloride



Analyzer

The Series 8900 Analyzer provides direct measurement of Methyl Ethyl Ketone, Chloroform and Carbon Tetrachloride in ambient air. This instrument is utilized for remediation and Super Fund sites and to monitor workplace exposure limits.

The Series 8900 Analyzer for Methyl Ethyl Ketone, Chloroform and Carbon Tetrachloride employs a flame ionization detector (FID) as the sensing element. A dual column configuration with timed backflush to vent is used to strip off moisture and heavier hydrocarbons. A pre-cut column is used in series with the analytical column. At sample injection a fixed volume of sample is carried to the pre-cut column. Backflush is timed so that only the Methyl Ethyl Ketone, Chloroform, Carbon Tetrachloride and other similar components are eluted to the analytical column. Contaminants on the pre-cut column are backflushed to vent. The chemicals are separated from potentially interfering components on the analytical column and elute to the detector for analysis.



Application

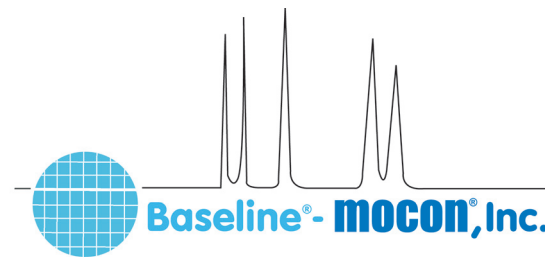
- Measurement at Superfund sites during remediation
- Monitoring workplace exposure limits

Features

- Direct measurement of Methyl Ethyl Ketone, Chloroform and Carbon Tetrachloride
- Interference free response
- Automatic calibration for unattended operation
- Automatic baseline adjustment for long-term stability
- Analog output ranges are user selectable
- Multipoint sampling options
- RS-232 and optional LAN

Series 8900GC Application Note

Methyl Ethyl Ketone, Chloroform and Carbon Tetrachloride



Specifications

Analysis Time: <360 seconds

Detector: FID

Column: Capillary

Oven Temperature: 70°C, Nominal

Carrier Gas: Hydrogen, 13cc/min, Nominal

Lower Detection Limit: <5 ppm

Accuracy: 1% of Full-scale

Precision: 2% of Measured Value

Span Drift (24HR): <2% of Full-scale

Sample Flow Rate: 250-500cc/min, typical

Output:

Analog: (1) 0-20ma or 4-20ma loop power supplied, isolated. Selectable for: gas concentration, unintegrated detector signal. Options for up to 20 additional programmable 0-20ma, 4-20ma or voltage outputs: 0-1V, 0-5V, or 0-10V.

Digital: RS-232, optional Local Area Network

Relays: (5) User programmable relays for concentration and diagnostic alarms (1A @ 30Vdc). Options for up to 32 additional relays available.

Inputs: Optional digital input board for 3 contact closure inputs. Supports start analysis, start calibration, and analyze calibration gas sample.

This application note is an only an example based on customer or market specifications. These parameters are variable and therefore do not reflect all of the versatility and options of Series 8900 GC. Please contact Baseline regarding your specific application

A019.2

P.O. Box 649, 19661 Highway 36 • Lyons, CO 80540

P: 1.800.321.4665 • 1.303.823.6661 F: 303.823.5151 E: Sales@BaselineIndustries.com