



SINGLE all-purpose water-operated temperature control units up to 180 °C *N-G series*

All-purpose water-operated temperature control units up to 180 °C from the N and G series are the core products of SINGLE's product range. Due to the fact that these units are available in many different dimensions for the medium to high capacity range and cater to a wide variety of different temperature ranges, they are at the heart of many special customized configurations. These units excel with utmost reliability and precision and offer a virtually unlimited number of options to cater to a wide variety of requirements.

Standard equipment

General

- Rugged, powder-coated sheet steel housing
- Automatic filling and replenishing
- Roller mounted

Hydraulics

- Hydraulic equipment stainless steel / non-ferrous metals (for type N and NS, otherwise optional)
- Incolloy heater
- High-quality pump materials
- Dirt traps in return and cooling water supply line
- Flow metering by means of differential pressure

Electric and control equipment

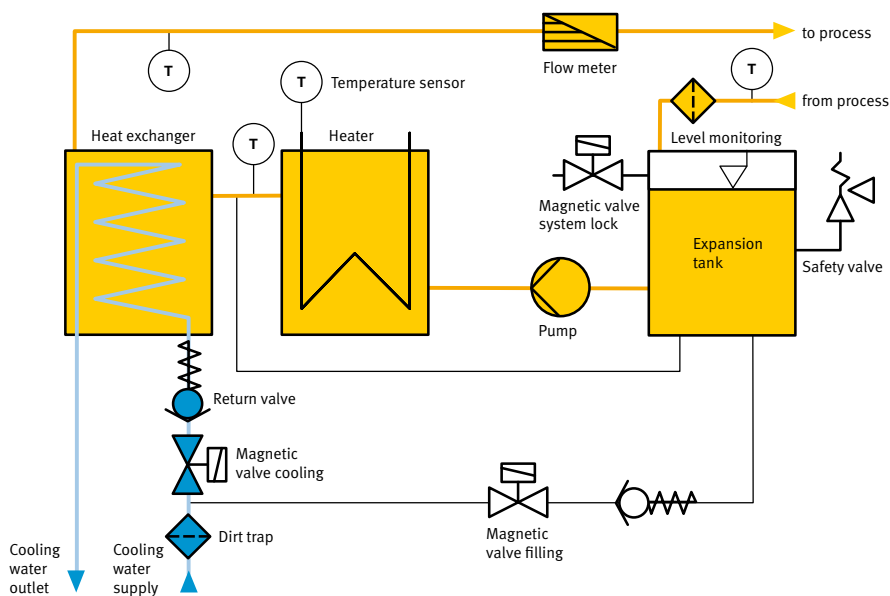
- Intelligent SC standard controller with colour display (optional SC professional)
- Heating control by solid state relay with fail-safe pilot contractor
- Switch box to IP54
- Cable connector without plug

Options

- Direct cooling without heat exchanger
- Plate heat-exchanger for highly efficient cooling capacity up to 150 °C
- Vapour heating
- Closed-loop control by pneumatic or motor-driven continuous control valves
- Connection for various analogue and digital electric interfaces
- Virtually unlimited hydraulic and electric options



☀️ ❄️ **SINGLE all-purpose water-operated temperature control units up to 180 °C**
N-G series



N-G series							
Structural units		N1	NS	S	SG	G	G2
Max. temperature range	°C	ZN1 up to 90	ZNS up to 90	ZS up to 90	ZSG up to 90	ZG up to 90	G2 up to 90
	°C	N1 up to 150	NS up to 150	S up to 150	SG up to 150	G up to 150	G2 up to 150
	°C	N1.1 up to 180	NS up to 180	S up to 180	SG up to 180	G up to 180	G2 up to 180
Max. external volume	l	66/20/22	103/28/14	98/23/9	160/44/22	472/154/106	588/169/106
Heating capacity	kW	6/9/12/18	12/18/24	24/30/36	24/36/48	48/60/72	72/96/120/144
Cooling capacity (80° C outlet/15 °C cooling water)	kW	34/52/81	52/81	69/92/116	92/116/174	116/174/232	116/232
Max. flow rate	l/min	75	100	150	240	400	650/950
Max. pressure (max. values of the characteristic)	bar	3,9/5,9*/9,8*	4/6,1*/7,5*/9,5*	4/6,1*/7,5*/9,5*	4,4/5,5*/6,7*/8,8*	4,3/5,8*/7,3*/8,6*	4,2/5,8*/6,8*/7,8*
Pump motor capacity	kW	0,55/0,75*	1,1/1,5*/2,2*	1,1/1,5*/2,2*	1,5/2,2*/3*	3/4*/5,5*	4/5,5*/7,5*/11*
Connections circulating media		G 3/4" FPT	G 1" FPT	G 1,25" FPT	G 1,5" FPT	G 2" FPT	DN 65 / DN 80
Connections cooling water	mm	14	14	14/21	14/21	21/28	21/28
at 180°C	FPT	G 1/2"	G 1/2"	G 1/2" - G 3/4"	G 1/2" - G 3/4"	G 1"	G 1"
Dimensions (without connections)	L mm	740	790	1105	1320	1715	1920
	W mm	315	345	355	395	505	540
	H mm	765	945	1045	1190	1350	1565
Approximate weight	kg	100	140	180	250	370	650

* Special pump