



# SINGLE mini water-operated temperature control units

## M series

The extraordinarily compact mini water-operated temperature control units from the M series are specially designed for small and laboratory applications with relatively low capacity requirements. If required, they can be combined to form multi-circuit temperature control systems.

### Standard equipment

#### General

- Rugged, powder-coated sheet steel housing
- Automatic filling and replenishing

#### Hydraulics

- Hydraulic equipment stainless steel / non-ferrous metals
- Incolloy heater
- High-quality pump materials
- Direct cooling without heat exchanger
- Dirt traps in return and cooling water supply line

#### Electric and control equipment

- SBC open and closed-loop control unit
- Heating control by solid state relay
- Switch box to IP54
- Cable connector without plug

#### Options

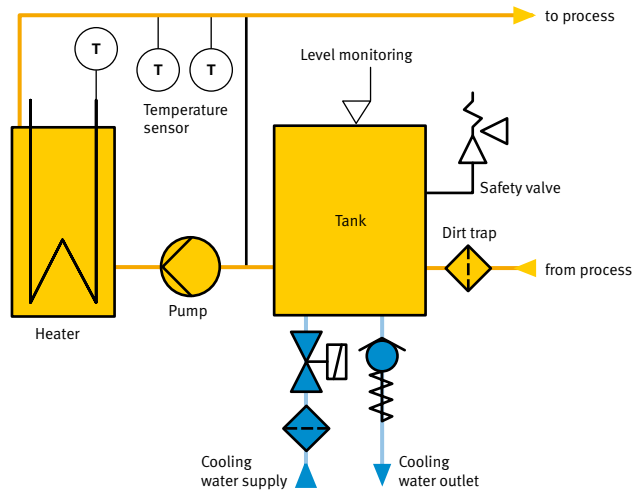
- Indirect cooling with heat exchanger (type M2 and up)
- Intelligent SC controller with colour display
- Pneumatic cooling water valves
- Up to 120 °C operating temperature, sufficient cooling water pressure provided
- Connections for various analogue and digital electric interfaces
- Virtually unlimited hydraulic and electric options
- Ecotemp system for cyclic temperature control





# SINGLE mini water-operated temperature control units

## M series



M series						
Structural units		M1	M2	M3	M4	M6
Temperature range	°C	90	90	90	90	90
Heating capacity	kW	1,5	1,5	3/4,5	4,5/6	6/9
Cooling capacity (80 °C outlet/15 °C cooling water)	kW	17	17	35	35/58	35/58
Max. flow rate	l/min	14	27	27	60	60/100*
Max. pressure (max. values of the characteristic)	bar	3,5	4,5	4,5	6	6/8,5*
Pump motor capacity	kW	0,12	0,25	0,25	0,75	0,75/2,8*
Connections circulating media	FPT	G 1/4"	G 3/8"	G 1/2"	G 1/2"	G 3/4"
Connections cooling water	FPT	G 1/4"	G 1/4"	G 3/8"	G 3/8"	G 3/8"
Dimensions (without connections)	L	mm	340	420	480	530
	W	mm	120	150	200	250
	H	mm	455	415	415	415
Approximate weight	kg	20	25	30	35	50

\* Special pump